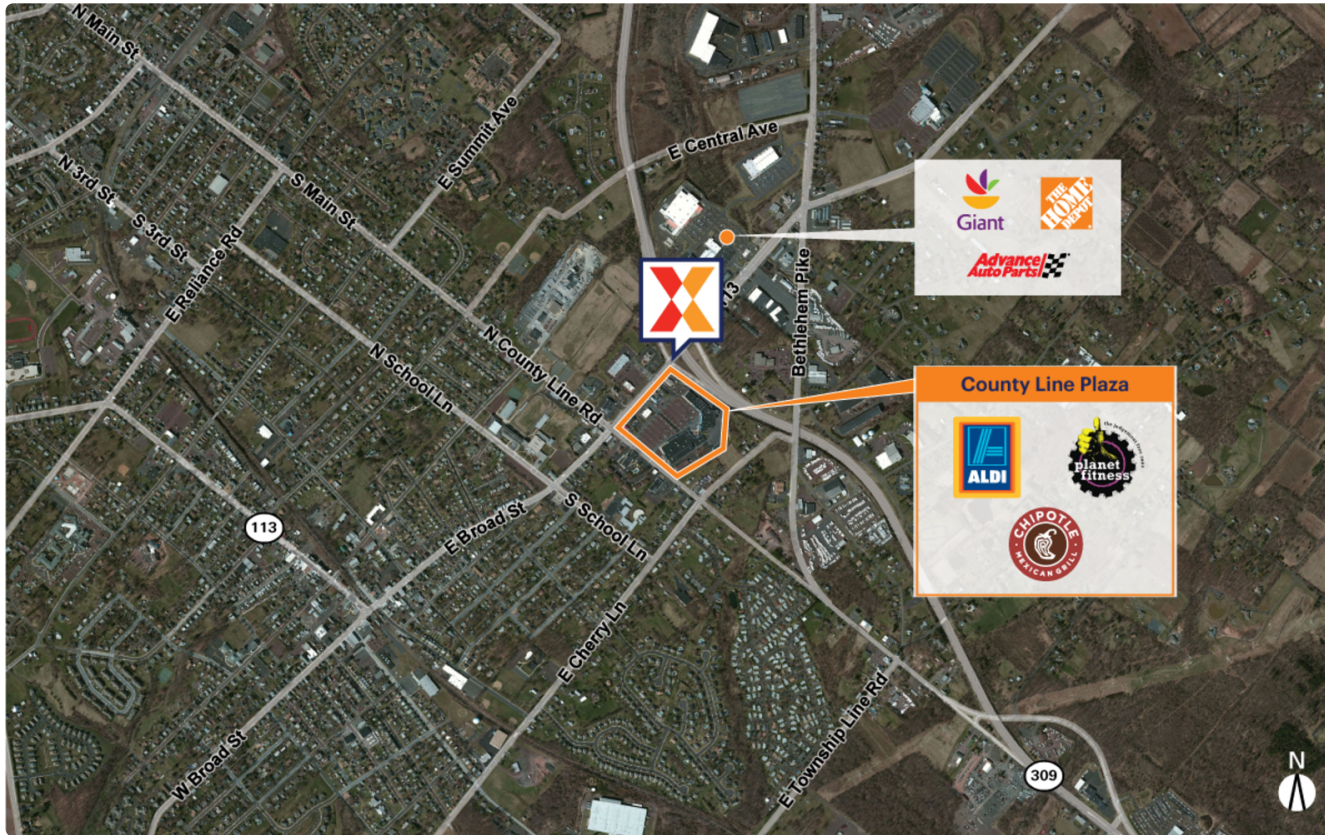


County Line Plaza

703 PA-113 | Souderton, PA 18964

Bucks County Philadelphia-Camden-Wilmington, PA-NJ-DE-MD 154,608 Sq Ft

40.3151, -75.3087



Demographics	1 Mile	3 Miles	5 Miles
Population	8,946	46,776	112,001
Daytime Pop.	13,621	44,902	112,045
Households	3,650	18,177	43,023
Income	\$122,393	\$131,638	\$143,071

Source: Synergos Technologies, Inc. 2024

Neighborhood center anchored by ALDI, Planet Fitness, Five Below, and Dollar Tree with strong national tenants including Chipotle Mexican Grill, Sherwin-Williams, and Leslie’s Pool drawing an estimates 2.6M annual visits (Placer.ai, 2025)

Surrounded by an affluent and well-educated population with an average household income of \$131K+ and 39% college educated within a 3-mile radius

High visibility from 18K+ VPD on W Main St and 34K+ VPD on Route 309 (Kalibrate, 2025)



County Line Plaza

703 PA-113 | Souderton, PA 18964

Bucks County Philadelphia-Camden-Wilmington, PA-NJ-DE-MD

154,608 Sq Ft

40.3151, -75.3087



Available Spaces

16 3,200 Sq Ft

Current Tenants Space size listed in square feet

1A	ALDI	21,393
1B	Liberty Ministries Thrift	31,673
1C	Dollar Tree	12,950
2	Queens Nutritional Products	1,500
2A	Queens Health Center II	1,800
3	Great Clips	1,500
4	iSmash	7,500
5	Hayabei Japanese Restaurant	3,200
6	PT Solutions Physical Therapy	3,200
8/8A	Planet Fitness	35,165
8B	Sparkle Nails and Spa	2,400
9	Leslie's Pool Supplies	4,450
10	Tropical Smoothie Cafe	2,000
11	T-Mobile	2,000
12	Sherwin-Williams	4,000
15	American Family Care	3,200
15A	Chipotle Mexican Grill	2,400
PAD	Five Below	11,077
NAP01	Express Lube	0
NAP02	Car Wash	0
NAP03	McDonald's	0
NAP04	Citizens Bank	0
NAP05	AutoZone	0

This site plan is for illustrative and information purposes only, showing the general layout of the shopping center; and is not a legal survey. Brixmor makes no representation or warranty that the shopping center is exactly as depicted as site conditions and tenant mix are subject to change over time.

4021

